



Patrick Edmund Matoole, MD

Physician & Neurologist

Josephson-Wallack-Munshower Neurology

Recipient of the 2015 Humanitarian Award

Awards & Honors

- Upcoming feature in the 2016 Cambridge Calendar Series
- Upcoming feature in “Top Doctors: Experts in Medicine”
- Recipient of the 2015 [Humanitarian Award](#)
- [Search the Elite Honoree](#)
- Recipient of the [Lifetime Achievement Award](#) in 2012 and 2015
- Honored as a Professional of the Year in Neurology (2011-2015)
- Listed among the [Elite American Physicians](#) in 2011, 2012 and 2015
- Interviewed by [Worldwide Broadcasting](#) in 2013
- Distinguished as a VIP Member of Worldwide Branding in 2010
- Exclusive features in Pro-Files Magazine
- Exclusive feature in “Top 101 Industry Experts”

A truly compassionate individual, Patrick Edmund Matoole, MD, has devoted his career to providing comprehensive neurological care for his patients. Currently, he serves as a physician and neurologist at Josephson-Wallack-Munshower Neurology PC, a



trusted provider of both pediatric and adult neurological health care. The practice was established in 1975 and has since built a stellar reputation for having highly skilled and passionate physicians who effectively treat Alzheimer’s disease, epilepsy, multiple sclerosis, Parkinson’s disease, spinal cord injuries and sleeping disorders. Additionally, they treat patients with headaches, brain injuries, muscle diseases and nervous system tumors, as well as people who have suffered from strokes. With 11 locations throughout the state of Indiana, JWM Neurology is able to assist patients across the state and beyond. As an affiliate of multiple hospitals, Dr. Matoole oversees hospital coverage for all neurology patients of the group and coordinates with the patient care committee.

Dr. Matoole holds a Bachelor of Arts in Chemistry from the University of Denver and an MD from the University of Nebraska. He completed an internship in internal medicine at the Medical College of Wisconsin’s affiliated hospitals in 1997 and went on to complete a residency in neurology at Creighton University in 2000. He then completed a fellowship in neurophysiology at Indiana University in 2001. Certified by the American Board of Psychiatry and Neurology, Dr. Matoole has established himself as a well-respected member of the field. In fact, he was recently honored as a Distinguished Humanitarian by Worldwide Branding in recognitions of his dedicated service. For more information about Dr. Matoole and his endeavors, please [click here](#) to read his latest press release.

Q&A with Dr. Matoole

An exclusive excerpt from Dr. Matoole's feature in "Top 101 Industry Experts"

Q. On what topic(s) do you consider yourself to be an expert?

A. I consider myself to be an expert in neurological health care, specializing in Alzheimer's disease. I also completed a fellowship in epilepsy and neuromuscular medicine, so I consider myself to be fairly versed in those areas as well.

Q. What motivates you?

A. The idea that I can recognize what others are dealing with and show compassion to them and then provide the best possible care that I can for them.

Q. What lessons have you learned as a professional in your field?

A. Compassion is necessary when you are dealing with patients. Over the years I have learned to be as thorough as I can be because people depend on what I do. I have also learned to be as gracious to referring doctors as possible because their new business is what keeps me in business.

Q. What do you find to be the most rewarding aspect of your profession?

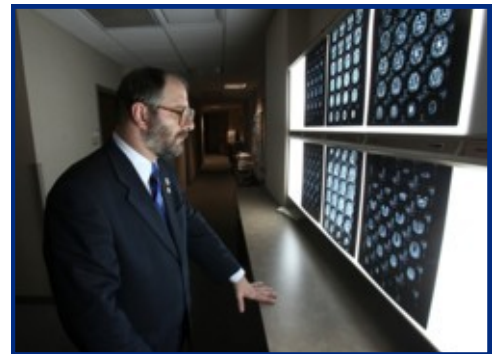
A. Seeing how pleased patients' families are when the outcome has been successful is rewarding. When you are treating a patient, you are oftentimes treating and counseling the family as well.

Did you know?

Dr. Matoole was interviewed by Cambridge Who's Who in 2011. [Click here](#) to view his video and interview!

Affiliations

- Indianapolis Medical Society
- Indiana State Medical Association
- AANEM
- American Academy of Neurology
- American Medical Association
- American Association of Neuromuscular and Electrodiagnostic Medicine
- National Multiple Sclerosis Society
- Phi Gamma Delta



Contact

317-859-1020 ext. 1720

www.drpatrickmatoole.com

www.jwmneuro.com